



SOFA
ART & DESIGN
SANTA FE

THE INTUIT
SHOW
FOLK AND OUTSIDER ART

For Immediate Release
June 15, 2011

Media Inquiries
Kristin Carlson
THINK Creative Consulting
(Office) 505.819.0824
(Mobile) 505.501.2497
k@thinkallday.com

Online Press Room:
sofaexpo.com/sfpress/

Produced by
The
Art Fair
Company

372 West Ontario St., #303
CHICAGO, IL 60654

t. 312.587.7632
f. 773.345.0774
sofaexpo.com

TOP 10 BEST OF THE BEST at SOFA WEST: Santa Fe 2011 and the Intuit Show of Folk and Outsider Art

Ready, Partner?

New Public Preview on Opening Night, Wednesday, August 3! For the third straight year, the **Museum of New Mexico Foundation (MNMF)** partners with SOFA WEST on an Opening Night FIRST LOOK preview for its major donors and business partners, sponsored by **Reynolds Insurance**. MNMF preview guests may enter at 5 pm, and SOFA WEST 2011 VIP cardholders at 6:30 pm. The **new! Opening Night Public Preview** begins at 7 pm. Tickets are \$50 and will be available on sofaexpo.com or at the door beginning at 5 pm. Opening Night continues until 9 pm. Now everyone can be among the first to view and acquire top artwork at the fair!

Outsiders In!

SOFA WEST and Chicago's respected **Intuit: The Center for Intuitive and Outsider Art** team up for a 'spotlight presentation' of **The Intuit Show of Folk and Outsider Art** at SOFA WEST. Leading the way are seminal dealers **Russell Bowman Art Advisory**, **Carl Hammer Gallery** and **Judy A Saslow Gallery**, all of Chicago, and **The Ames Gallery** (Berkeley, CA). Other new Intuit dealers: **Galerie Bonheur** (St. Louis, MO); **Garde Rail Gallery** (Austin, TX); **Packer Schopf Gallery** (Chicago); and **Yard Dog Art Gallery** (Austin, TX). A private welcome reception for The Intuit Show is planned on Museum Hill by the Museum of International Folk Art, Intuit Center and SOFA WEST.

Bigger IS Better!

Up 25%, SOFA WEST grows to 35 dealers! New galleries include two from London, **Flow Gallery** and **Zest Gallery**, expanding UK and Scandinavian artworks on offer; **Darrell Bell Gallery** of Saskatoon, Canada presents masters of the Regina Clay movement **Joe Fafard** and **Victor Cicansky**; Chicago's **Douglas Dawson Gallery** adds historic, antique and contemporary Non-Western art; **Landfall Press** (Santa Fe) represents limited edition prints by renowned artists; **Jerry Szor Contemporary Jewelry** (Dallas) brings more contemporary jewelry to the mix; and fine art galleries **222 Shelby Street Gallery** and **Eight Modern** (both of Santa Fe) round out contemporary offerings.

Light, Air: Design at the Fair

Modernism lives on in **Bodil Manz's** delicate vessels at **CLARK + DEL VECCHIO** (Santa Fe), and **Nino Caruso's** terracotta sculpture at **222 Shelby Street Gallery** (Santa Fe). Don't miss **David Ebner's** sleek furniture at **William Zimmer Gallery** (Mendocino, CA). And new at the fair! An invitation-only Design Reception and panel discussion sponsored by **Trend Magazine**. Moderated by **Robert Reck**, Robert Reck Photography, panelists **Paul Fehlau** and **Karole Mazeika** (Antoine Predock Architect PC); **Kris Lajeskie** (Kris Lajeskie Design Group); **Victoria Price** (Victoria Price Art and Design); and **Beverley Spears** (Spears Architects) discuss *Southwestern Dreamin': High Desert Aesthetic in Contemporary Architecture and Design*.

Go Long

Lecture Series expands to 4 days! Thursday-Sunday, August 4-7, featuring **James Baker**, Executive Director, **Pilchuck Glass School** (Portland, OR) with artists **James Drake** and **John Torreano**; **Laura Addison**, Curator, NM Museum of Art with collector **Lee Dirks** and Manhattan Asian art dealer **Joan B. Mirviss**; outsider art collector **Eugenie Johnson** and **Cleo F. Wilson**, Executive Director, **Intuit: The Center for Intuitive and Outsider Art**, Chicago; Non-Western art dealer **Douglas Dawson** (Chicago); sculptor **Ted Larsen** (Eight Modern, Santa Fe) with **John O'Hern**, former director **Arnot Art Museum**, Elmira, NY; also noted artists **Rick Beck** (Thomas R. Riley Galleries, Cleveland, OH); and **Tammy Garcia** and **Shelley Muzylowski Allen** (Blue Rain Gallery, Santa Fe).



SOFA WEST: Santa Fe 2010
Opening Night



Martin Ramirez
Carl Hammer Gallery, Chicago IL



Queen Mothers Pipe
Douglas Dawson Gallery, Chicago



Nino Caruso
222 Shelby Street Gallery, Santa Fe



James Drake
Courtesy NM Museum of Art

- More -

Way Out(sider)

Peek inside elaborate fantasy worlds and extreme mental states in Intuit Show works by **Henry Darger** and **Martin Ramirez** (Carl Hammer Gallery, Chicago); **Carlo Zinelli** (Judy A Saslow Gallery and Russell Bowman Art Advisory, both of Chicago); **Eugene Von Bruenchenhein** (Carl Hammer and Packer Schopf Gallery, Chicago); **Lee Godie** (Carl Hammer and Packer Schopf); **A. G. Rizzoli** (The Ames Gallery, Berkeley, CA); **James Castle** (Russell Bowman); and **Harry Young** (Packer Schopf). Also, seminal African-American folk art by **Bill Traylor** (Judy A Saslow and Russell Bowman); **Joseph Yoakum** (Carl Hammer, Russell Bowman and Judy A Saslow); and **Mose Tolliver** (Yard Dog Art Gallery, Austin, TX).



Carlo Zinelli
Judy A Saslow Gallery, Chicago

Contemporary (Native) Art

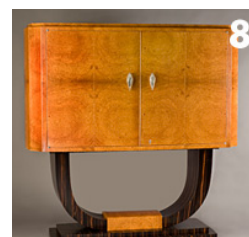
Leroy and **Tammy Garcia** of **Blue Rain Gallery**, Santa Fe discuss its evolution (along with their artists!) from Contemporary Native to Contemporary Art branding. More proof positive of this trend: Navajo potter/contemporary sculptor **Christine McHorse** and satiric ceramicist **Diego Romero** at **CLARK + DEL VECCHIO**, Santa Fe). Also **Marcus Amerman's** beadwork/object art at **Elliott Arts West** (Santa Fe). Don't miss 9 metalsmiths on the cutting-edge at **SWAIA@SOFA: Contemporary Metal** (Santa Fe). Bruce Bernstein, Director of SWAIA (Southwest Association of Indian Arts) says, "First and foremost these are supremely talented artists whose work is aesthetically stunning and emancipating."



Tammy Garcia
Blue Rain Gallery, Santa Fe

Material Wealth

Unusual materials include tin in **Monica Cecchi's** art jewelry (**Charon Kransen Arts**, New York); rare Kilawa and Amboyna woods in **Kent Townsend's** furniture (**Jane Sauer Gallery**, Santa Fe); **Joanne Teasdale's** fusion of photography and kiln-formed glass (**Bullseye Gallery**, Portland, OR); granite and glass sculpture of **Thomas Scoon** (**David Richard Contemporary**, Santa Fe); **Davide Salvatore's** blown/carved glass with metal and beads (**Habatat Galleries**, Royal Oak, MI); porcelain on steel sculpture by **Leigh Taylor Mickelson** (**Sherrie Gallerie**, Columbus, OH); and **Hans-Henning Pederson's** paper-thin vessels of beech and ash from Denmark's Bornholm Island (**Flow Gallery**, London).



Kent Townsend
Jane Sauer Gallery, Santa Fe

Spotlight: Asian Arts

The New Mexico Museum of Art presents a SOFA WEST special exhibit previewing the Museum's upcoming show, *Kimono: Karen LaMonte and Prints of the Floating World*, with an accompanying Lecture Series presentation. **Joan B. Mirviss Ltd** (New York) presents masters of contemporary Japanese ceramic sculpture including **Sakiyama Takayuki**; **TAI Gallery** (Santa Fe) showcases Japanese bamboo artistry and photography; new dealer **Mindy Solomon Gallery** (St. Petersburg, FL) offers paintings by **Sungyee Kim** and ceramics by **Kang-Hyo Lee**, both of Korea; also new! **Dai Ichi Arts** (New York) represents Chinese and Japanese ceramics including **Shoji Hamada**, the 'father' of studio pottery in the West.



Sakiyama Takayuki
Joan B. Mirviss. Ltd., New York

Keep the Faith?

With visionary artists **Rev. Howard Finster** and **Edgar Tolson** at **Russell Bowman Art Advisory** (Chicago); **Sister Gertrude Morgan** at **Carl Hammer Gallery** (Chicago) and **Bahamian Amos Ferguson** (Galerie Bonheur, St. Louis, MO). Behold **Bruce New's** apocalyptic collages of wings, faces, horses, skulls and other images at **Yard Dog Art Gallery** (Austin, TX); and **A. G. Rizzoli's** fantasy 'expeau'—of 'Superior Beauty and Permanency,' inspired by the 1915 Panama Pacific International Exposition in San Francisco, which Rizzoli called Y.T.T.E. for 'Yield To Total Elation' (**The Ames Gallery**, Berkeley, CA). Then sail away on acclaimed self-taught **John Taylor's** model ships made from found objects at **Garde Rail Gallery**, Austin, TX,



A.G. Rizzoli
The Ames Gallery, Berkeley, CA

###

SOFA WEST: Santa Fe 2011 and spotlight presentation of The Intuit Show of Folk and Outsider Art take place at the Santa Fe Convention Center, 201 W Marcy Street, Santa Fe, NM as follows: Opening Night, Wednesday, August 3 begins with FIRST LOOK Preview, an invitation-only event for Museum of New Mexico Foundation supporters from 5-6:30 pm. SOFA WEST VIP Cardholders may enter at 6:30 pm. Opening Night Public Preview begins at 7 pm. Tickets are \$50 and will be available on sofaexpo.com or at the door beginning at 5 pm. Opening Night continues until 9 pm. General admission fair hours are Thursday, August 4 - Sunday, August 7 from 12 noon-6 pm. Tickets are \$15 for single day general admission and \$25 for a four-day pass. Catalogs may be purchased for \$15 at the exposition. Visit www.sofaexpo.com for more information.

High-resolution images and press releases are available for immediate download at www.sofaexpo.com/sfpress.