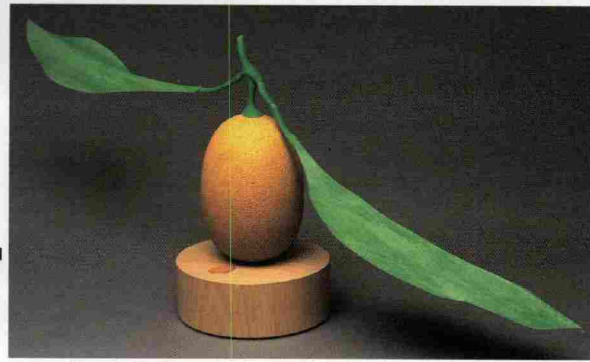
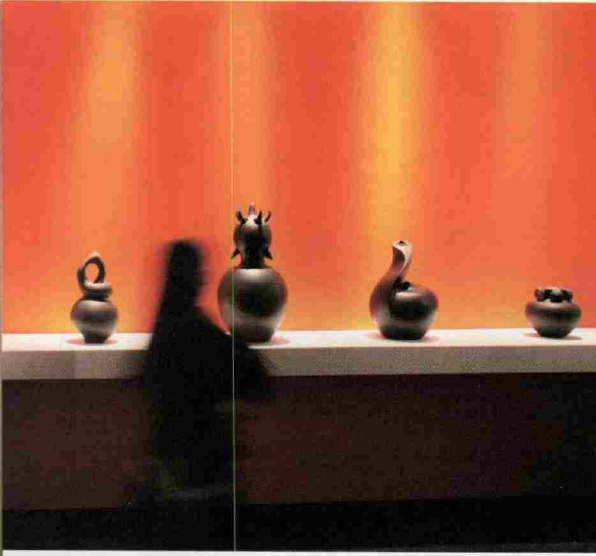


Virgil Ortiz, *Untitled*, 2005, earthenware, 16½" x 11", private collection, represented by Clark+Devecchio, Santa Fe



John Tinker, *Kumquat*, 2008, oil and encaustic on wood, epoxy resin, 15½" x 27 x 8", represented by Linda Durham Contemporary Art, Santa Fe, New Mexico

ART STOP: SANTA FE
In Good Form

WHEN **MARK LYMAN**, founder of the Sculptural Objects and Functional Art (SOFA) fair, decided to expand his contemporary decorative-arts exhibition westward from Chicago and New York City, he considered the hip cultural centers of San Francisco, Los Angeles, and Seattle. But in the end, he chose Santa Fe.

Lyman says he was won over by the combination of Santa Fe's new convention center, the enthusiasm of the local art community, and the city's reputation as a destination for art collectors: "I thought it would be a fantastic and interesting place to bring a show."

Lyman kept his expectations low for the first SOFA West, in 2009, expecting about 4,000 to 5,000 people to attend the three-dimensional art show, which easily draws tens of thousands of people in Chicago, where it originated. But "We got 10,000!" he says. "It was quite a surprise."

SOFA is primarily an exhibition of contemporary decorative art from around the U.S. and the world. Last year's event

Last year, 10,000 art-lovers attended the first SOFA West show of furnishings, sculpture, and other three-dimensional objects. This year, presenters have added a pre-show, three-day symposium, **Historic Bond/Contemporary Spirit: Collecting New Southwest Native Pottery July 6-8.**

featured exhibits from more than 33 galleries. The works are priced from about \$100 to as much as \$100,000, and the styles of art presented are as diverse as the prices.

At SOFA, functional pieces such as lamps and tables sit side by side with more conceptual objects, and everyday materials such as wood and glass assume new roles via unexpected finishes and treatments. The crowd—a mix of artists, collectors, and dealers, and tourists who wander in off the street—has a more modern flavor than that of some of Santa Fe's more traditional art markets. The show's venue, the Santa Fe Community Convention Center, is within walking distance of at least two-dozen unique Santa Fe eateries.

This year's SOFA West will honor Santa Fe's rich heritage of Native American pottery with a three-day pre-show symposium, **Historic Bond/Contemporary Spirit: Collecting New Southwest Native Pottery.** The symposium will take place July 6-8, and will include visits to nationally recognized private collections, as well as presentations by scholars and art collectors exploring the relationship between traditional and contemporary ceramic work.

\$15-\$25. Santa Fe Community Convention Center, 201 W. Marcy St. July 8-11. (800) 563-SOFA (7632), www.sofaexpo.com

—Phaedra Haywood

