



**WITH A NEW DESIGN AND AN EXCITING ROSTER OF DEALERS, SCULPTURE OBJECTS & FUNCTIONAL ART FAIR (SOFA NEW YORK) CELEBRATES 15 YEARS IN NEW YORK APRIL 20-23 AT THE PARK AVENUE ARMORY**

**Media Inquiries**

Marilyn White Public Relations:  
Marilyn White: (973) 783-3649  
MWhitePR@aol.com

Online Press Room:  
[sofaexpo.com/press/](http://sofaexpo.com/press/)

New York – **With a new design scheme and an exciting roster of international dealers, The Sculpture Objects & Functional Art Fair (SOFA NEW YORK) celebrates its 15<sup>th</sup> anniversary on Friday, April 20 through Monday, April 23, 2012** at the Park Avenue Armory, 67<sup>th</sup> Street and Park Avenue. The fair’s invitation-only **Opening Night VIP Preview** is Thursday, April 19 from 5-7 pm, followed by a Public Preview from 7-9 pm by ticket purchase.



SOFA NEW YORK 2011 Opening Night Preview



Lino Tagliapietra (right) at SOFA

“We are delighted to celebrate SOFA NEW YORK’s 15<sup>th</sup> anniversary in **the art capital of the world,**” says **Mark Lyman**, President of The Art Fair Company and founder of SOFA. “SOFA dealers have always been at the forefront of promoting studio artists and designers when they were just starting to gain recognition.” According to Lyman, SOFA was instrumental in bringing attention to luminaries such as **Rudy Autio, Ruth Duckworth,**

**Wendell Castle, Olga de Amaral, Dale Chihuly, Jun Kaneko, Betty Woodman, Stanislav Libensky and Jaroslava Brychtova, Sam Maloof, William Morris, Beatrice Wood, Philip Moulthrop, George Nakashima, Ted Noten, Lenore Tawney, Albert Paley, Ed Rossbach, Lino Tagliapietra, Peter Voulkos, and Michael Zobel.** “These artists are always breaking new ground and SOFA dealers continue to re-introduce them, and many up-and-coming artists, to a whole new audience,” says Lyman, whose career as an art fair organizer spans 25 years.

**Donna Davies**, Director of SOFA fairs in New York, Chicago and Santa Fe adds, “**In celebration of SOFA NEW YORK’s milestone 15<sup>th</sup> anniversary, plans are underway to reinvigorate the design and aesthetics of the exhibition hall.** We look forward to presenting an exciting group of new dealers this fair who are strong in international ceramics.”



Sandra Davolio  
J. Lohmann Gallery  
New York, NY

The  
**ArtFair**  
Company

372 West Ontario St., #303  
CHICAGO, IL 60654

t. 312.587.7632  
f. 773.345.0774  
[sofaexpo.com](http://sofaexpo.com)

Among the new faces Davies cites:

- ▶ **Cultural Connections CC** (Missenden, England), specialists in Danish ceramics. “We look forward to presenting a new generation of Danish contemporary studio ceramicists with the skill and creative force to stand alongside their eminent and internationally admired colleagues,” said gallery director Birthe Fraser. “The goal is to show how these artists’ works blend, both visually and technically.” Among the artists are **Ninna Goetzsche, Dorte Visby, Vibeke Stubbe Teglbjerg, Jean-Francois**



Marie Torbensdatter Hermann  
Cultural Connections CC  
Missenden, England

**Thierion, Mette Augustinus Poulsen, and Marie Torbensdatter Hermann**, about whom Fraser will speak in the SOFA NEW YORK Lecture Series. Additionally, Fraser will offer a small private collection of **Gutte Eriksen’s** works (1918-2008). Eriksen, whom Fraser called “the grand dame of Danish ceramics,” was awarded the prestigious **Thorvald Bindesbøll Medal of the Danish Academy of Fine Arts** in 1992, and in 2000 received **The Prince Eugen Medal**, awarded by the Swedish Royal Family for outstanding artistic achievement.

- ▶ **Erskine, Hall & Coe** located in London’s Mayfair, specialists in 20th century and contemporary ceramics. Former director of the prestigious Galerie Besson, Matthew Hall established the new gallery with his partners in the same Bond Street location when seminal ceramics dealer Anita Besson retired in June. The gallery opened in November and will bring an impressive roster of international ceramic artists to SOFA NEW YORK. Represented artists include **Lucie Rie and Hans Coper, Jennifer Lee, Gwyn Hanssen Pigott, Shozo Michikawa, and Sara Flynn**.

- ▶ **Flow Gallery**, also from London: Yvonna Demczynska of Flow said, “Our international selection of artists will include Dutch artist **Henk Wolvers**, master of porcelain who creates colorful, subtle forms alive with movement and translucency. Wolvers’s work, *Lines*, was recently purchased for **The Victoria & Albert Museum** in London. **The Museum of Arts and Design** in New York also purchased a Wolvers piece for its permanent collection. At SOFA NEW YORK, we will be offering Wolvers’s wall-based installations as well as beautiful, lace-trimmed vessels in cobalt blue.”



Henk Wolvers  
Flow Gallery  
London, UK

- ▶ **Megumi Ogita Gallery** (Tokyo, Japan), focusing on young Japanese and American artists remarkable “for their absorption and adaptation of traditional materials and techniques in startling new expressions.”

The  
**ArtFair**  
Company

372 West Ontario St., #303  
CHICAGO, IL 60654

t. 312.587.7632  
f. 773.345.0774  
[sofaexpo.com](http://sofaexpo.com)

**Returning** dealers gearing up for strong SOFA NEW YORK presentations:

- ▶ **Ferrin Gallery** (Pittsfield, MA), plans another exciting focused group installation. “COVET is the concept for our stand this year,” said co-owner, Leslie Ferrin. “We have invited ten artists to each choose an object in a museum, correspond with its respective curators and create an artwork or series based on that object.” **Molly Hatch** will be the featured artist and is currently working with several public collections including the Museum of Fine Arts Boston and its curator, **Emily Zilber**, the first **Ronald L. and Anita C. Wornick Curator of Contemporary Decorative Arts** and **Kathleen Morris**, the **Sylvia and Leonard Marx Director of Collections and Exhibitions Curator of Decorative Arts** at the **Sterling and Francine Clark Art Institute**, Williamstown, MA.  
31-year-old Hatch is a designer of exclusive collections for **Anthropologie**. Other stand-out COVET artists include **Giselle Hicks**, working with the **The Metropolitan Museum**, New York; and **Mara Superior** working with the **Peabody Essex Museum** in Salem, MA.
- ▶ **TAI Gallery** (Santa Fe, NM) will have “an outstanding selection of Japanese Bamboo art. Among the artworks we will show are a wonderful new series of bamboo and lacquer vases by **Fujinuma Noboru**. His skill in working with bamboo was recently highlighted by his solo exhibition at the **Art Institute of Chicago**. This recent series of pieces shows a whole other side to Fujinuma’s vast skill and talent. Working with layers of colored lacquer and texture, he creates a rich visual surface on each artwork.”
- ▶ **Sarah Myerscough Fine Art** of London’s Mayfair will again present a prestigious roster of international sculptural and turned wood artists.

As always, cutting-edge international art jewelry promises to be very strong at the fair on offer by premier dealers **Charon Kransen Arts** (New York), **Ornamentum** (Hudson, NY) and **Sienna Gallery** (Lenox, MA). Kransen reports he will feature jewelry by **Monica Checci**, **Jaclyn Davidson**, **Felieke van Der Leest**, and **Iris Tsante** of such unusual materials as mild steel, tin, textiles, plastic, and pencils!



Felieke van Der Leest  
Charon Kransen Arts  
New York, NY

Additional returning galleries of note include: **Duane Reed Gallery** (St. Louis, MO); **Heller Gallery** (New York); **Jane Sauer Gallery** (Santa Fe, NM); **Lacoste**



SOFA NEW YORK 2011 Lecture Series

**Gallery** (Concord, MA); **Scott Jacobson Gallery** (New York); **Wexler Gallery** (Philadelphia); and **William Zimmer Gallery** (Mendocino, CA).

The acclaimed **SOFA Lecture Series**, free with paid admission, is well into the planning stages. 470 fairgoers enjoyed lectures last year. Leading the way on this year’s docket is glass artist/designer **Dan Dailey (Schantz Galleries**, Stockbridge, MA), internationally-known for his vibrant, humorous sculpture and luminary art. A **VIP Program** for upper-level collectors and gallery clients will again offer VIP cardholders ultra-exclusive private collections and curator-led museum exhibitions tours. Over 400 VIPs participated in the program last year.

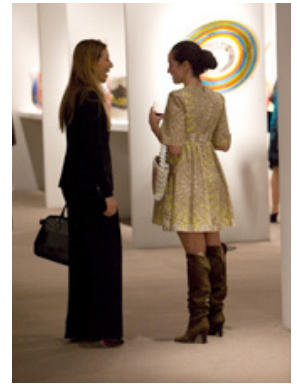
The  
**ArtFair**  
Company

372 West Ontario St., #303  
CHICAGO, IL 60654

t. 312.587.7632  
f. 773.345.0774  
[sofaexpo.com](http://sofaexpo.com)

**Special happenings at the fair:**

- ▶ **Friday evening Savvy Soirée, April 20** for the 35 and under set. Last year's enthusiastic crowd included alumni from the **Institute of Fine Arts, Rhode Island School of Design (RISD), School of Visual Arts, New York University, Cooper Hewitt Design Museum, Boston University's MFA Program, Pilchuck Glass School, and Chicago Art Institute**; young collectors groups from the **Museum of Modern Art, The Smithsonian, The Whitney Contemporary, Fuller Craft Museum, and Christie's and Sotheby's auction houses**; and young designers from the offices of **Bradley Stephens, Jayne Michaels, Adrienne Neff, Jennifer Eisenstadt, Tamara Eaton, and Tim Button**.



SOFA NEW YORK 2011  
Young Collectors Night

- ▶ The 2<sup>nd</sup> annual **LongHouse Reserve Special Recognition Awards** for Best Artwork in Show and Best Booth Design. **LongHouse Reserve** in East Hampton, New York is designer **Jack Lenor Larsen's** public exhibition space, arboretum, and sculpture garden. **Larsen's** name is synonymous with twentieth-century textiles, and is one of only four Americans honored with a retrospective at the Palais Du Louvre, Paris. Larsen will select the LongHouse Prize recipients in both categories and announce the winners at the Designer Breakfast.
- ▶ The 5<sup>th</sup> annual **invitation-only Designer Breakfast Preview, Friday, April 20**, planned in consultation with SOFA's National Design Committee, which includes such notables as **Alexander Gorlin, Amy Lau, Juan Montoya, Jamie Drake, Nancy Epstein, Steven Gambrel, David Ling, and Joyce and Maya Romanoff**. Over 150 designers and architects attended last year's breakfast.



SOFA NEW YORK 2011  
Designer Breakfast

Davies concludes, "We look forward to our 15<sup>th</sup> consecutive show in New York, and for SOFA to continue its lead in presenting the best international studio art and design fairs for another 15 years!"

---

**SOFA NEW YORK LISTING**

15th Anniversary SOFA NEW YORK 2012 will open April 20 - 23rd at the Park Avenue Armory, Park Ave. at 67th Street. Fifty-five international galleries present studio art and design for sale. Opening Night, Thursday, April 19: Invitation-only 5-7pm; Public Preview 7-9pm. Exposition hours: Friday, April 20: 11am-7pm; Saturday, April 21: 11am-7pm; Sunday, April 22: Noon-6pm; Monday, April 23: 11am-5pm. Tickets are \$25 for a single day of general admission and \$40 for a four-day pass; both include catalog. For general information, visit [www.sofaexpo.com](http://www.sofaexpo.com); call 800-563-SOFA (7632) or 312-587-7632; or email [info@sofaexpo.com](mailto:info@sofaexpo.com). Press images and information at [www.sofaexpo.com/press](http://www.sofaexpo.com/press).

The  
**Art Fair**  
Company

372 West Ontario St., #303  
CHICAGO, IL 60654

t. 312.587.7632  
f. 773.345.0774  
[sofaexpo.com](http://sofaexpo.com)

###